



FUSION 40 SAIL



KIT COMPONENTS,
MOTORAWAY - SAILAWAY, OR
FULLY FINISHED BY AGENTS.

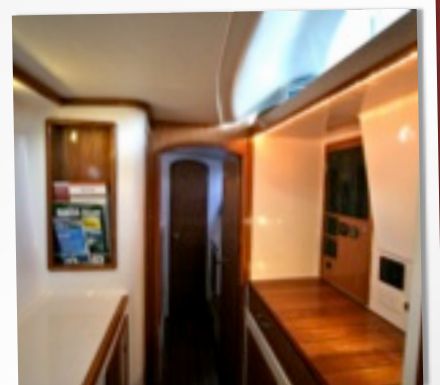
Whether you want to build your own or just step aboard and turn the key, Fusion Catamarans and their agents have the perfect solution for you.



GALLEY



SALON



NAVIGATION

The Fusion 40 Project

INTRODUCTION

Unlike most Catamaran manufacturers, the Fusion 40 was designed with the serious cruiser in mind, and not dictated to by some charter organisation. Lengthy discussions with specialist multihull yacht brokers were undertaken to rationalise the preferred requirements of the buying public and sizes were analysed before the dimensions were given to the Gary Lidgard design studio.

One critical element was to have the vessel produced by the Infusion Moulding process and to achieve this, the leading Australian authority "Composites Innovation" was engaged to supervise the manufacture of moulds from computer design through to the use of a 5-axis router for accurate component mould manufacture.

This process has brought about a gelcoat finish on the Fusion 40, that most companies only dream of, and a weight and strength ratio never before seen on a production catamaran. Whether you are looking for a cat to do the weekend race, coastal hop or cruise the oceans of the world, Fusion 40 is at the leading edge.

INFUSION BY VACUUM IS THE MOST ENVIRONMENTALLY FRIENDLY PROCESS

INFUSION TECHNOLOGY

This method of construction employs procedures and cloth used in the aerospace and defence industries.

Infusion by vacuum gives a better result than the pre-impregnated systems because it helps prevent air bubbles staying in the laminate and also gives a better fibre to resin ratio.

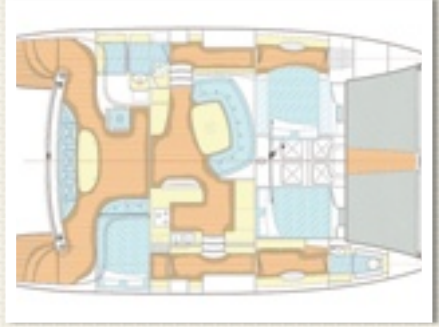
The infusion process is carried out within an enclosed environment, hence an environmentally friendly process.

This technology allows the cloth and cores to be laid with precision and uniformity before the infusion, which guarantees bonding quality.

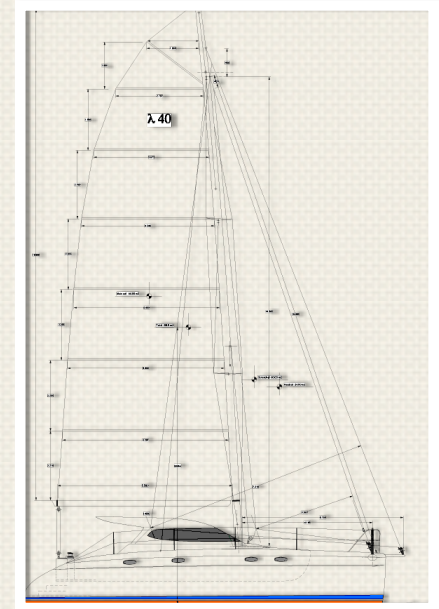
This method of construction is preferred by Government bodies because of its repeatability and the easy access to the cloth and core layers for inspection prior to the infusion process.

The components are infused using vinyl-ester resin which has a guaranteed high Tg. This resin provides results comparable to epoxy, and helps eliminate the chance of Osmosis.

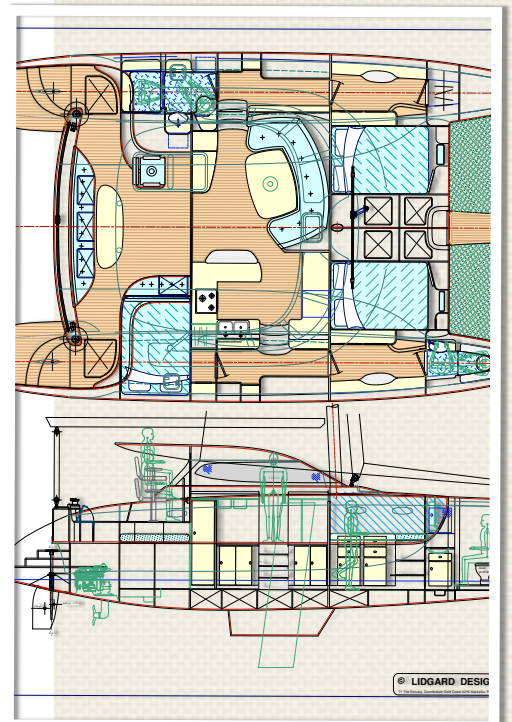
THE BOAT



STANDARD LAYOUT



SAIL PLAN



INTERIOR



THE WORLD'S FIRST "PRODUCTION CATAMARAN KIT"



This is not the 'cheapest' kit on the market, it's the BEST

COMPARE FUSION

1. PRODUCTION MOULDED
2. UNDERWATER IS SOLID INFUSED FIBREGLASS
3. PARTS CAN BE ASSEMBLED IN 2 WEEKS
4. NO TIMBER TO ROT
5. GREAT RESALE VALUE
6. MODERN PERFORMANCE DESIGN
7. FULL SUPPORT FOR OWNER BUILDERS

What value do you place on your families and friends lives? Fusion's moulded components have been engineered to withstand the extreme conditions you may possibly experience at sea. Solid glass in all areas of thru hull fittings, up to 5000 gms of infused woven glass in the underwater sections. (Not 2 layers as in most kit boats). Plus the security of internal moulded Hull liners.

The image on the right shows a section of the side deck which was removed for the chain plate installation, note the foam core insulation for the deck and the solid glass on the shoulders where the stanchion bases, padeyes, turning blocks etc will be securely mounted.



Yes Fusion have gone to enormous lengths to produce the best and safest product possible.

When you add the massive time savings and the fact that you gain access to manufacturers and importers of the additional products to finish, I am sure you will recognise the true cost savings in selecting the Best.

ANYONE COULD ASSEMBLE THIS



IF YOU ARE OLD ENOUGH TO REMEMBER THE AMAZINGLY POPULAR AIRFIX KITS THEN YOU WOULD HAVE A REALLY GOOD IDEA ON HOW THE FUSION 40 KIT COMPONENTS COME TOGETHER.

IF YOU ARE YOUNGER AND HAVEN'T HEARD OF THE AIRFIX KITS, DON'T WORRY, FUSION HAVE IN PLACE A SUPPORT SYSTEM THAT WILL PROVIDE AS MUCH OR AS LITTLE AS YOU NEED. FOR A QUICK ASSEMBLY CHECK OUT THE KIT WEBSITE @ WWW.FUSIONCATS.COM

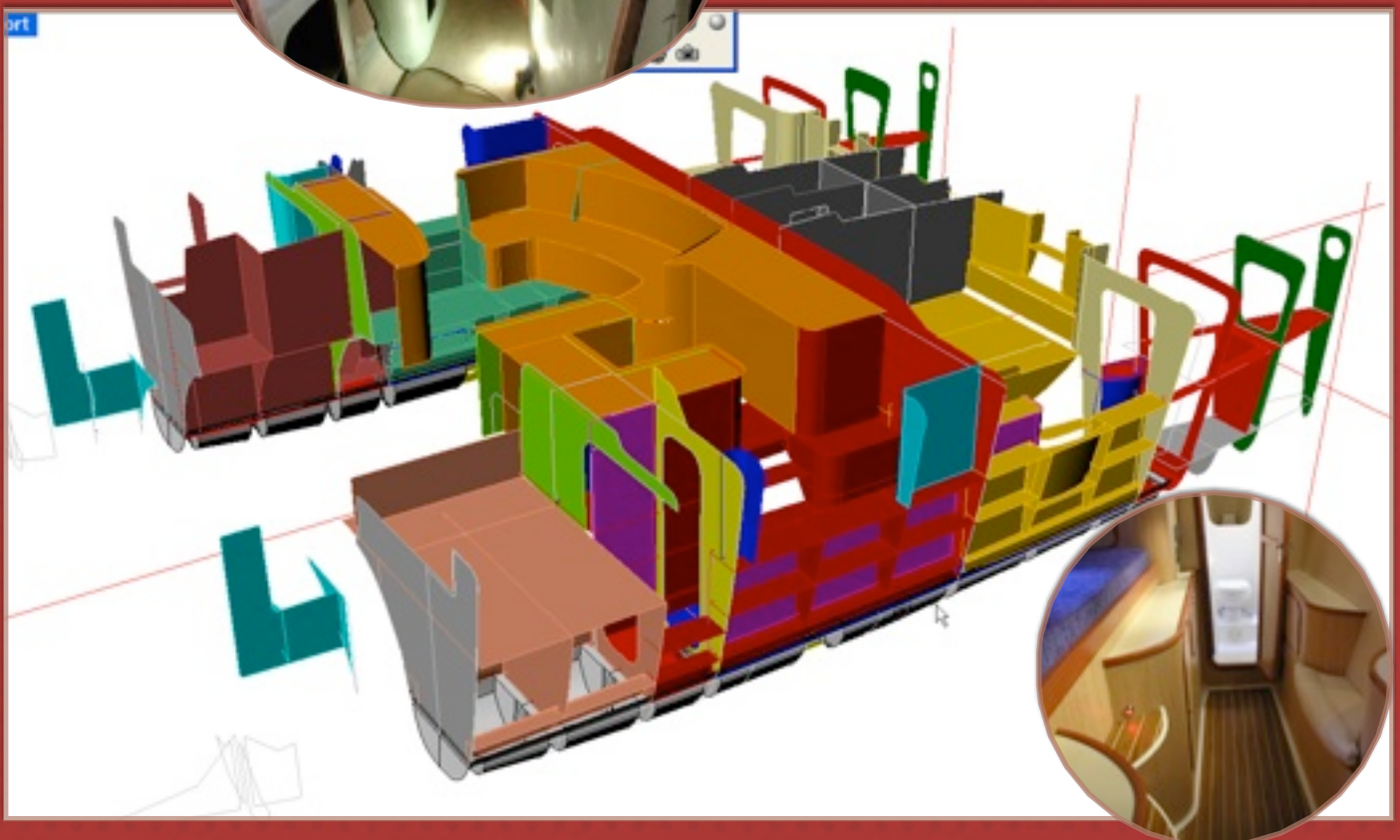
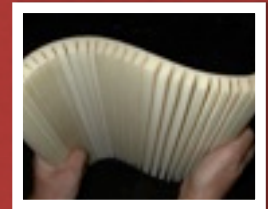
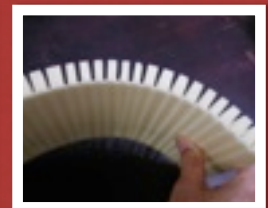
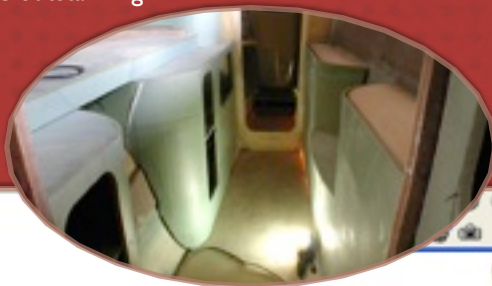
SPECIFICATIONS:

LOA.....	12.2 metres 40ft
BOA.....	7.2 metres 23'6"
Draft with Boards.....	800 mm 3'2"
Headroom in Hulls.....	1.95 metres 6'4"
Headroom in Bridgedeck.....	1.95 metres 6'4"
Mast Height	17.260 metres 57ft
Sail Area (main + headsails)	157 sq metres 1,700 sq ft
Payload	1850 kg 4000 lb
Displacement	5,750 kilograms
Displacement Lightship.....	4,125 kilograms
B/Deck Clearance	800 mm
Fuel Capacity	380 litres
Water Capacity.....	800 litres
Motors	2 x YM30 Diesel Saildrives
Motoring Speed - cruising	8 knots
Motoring speed - top	9.5 knots
Sailing speed	10 + knots



FURNITURE:

One of the big advantages of the Fusion over an ordinary production boat is that you can customise it to suit yourself, and the furniture options as with materials available to you, are many. Whether it be fully moulded from one of the agents, or Multipanel, Featherlite, Ply or infused flat panels the results achieved are outstanding and in most cases superior to the production boats



OWNER'S CRUISING PICS



Fusion Assembly, Support, and Pricing:

DECISIONS:

1. SAIL OR POWER KIT?
2. YOUR FURNITURE CHOICE
3. HELP WITH ASSEMBLY?
4. MOTORAWAY?
5. SAILAWAY?
6. PLUS FURNITURE?
7. BASIC FUSION CRUISER?
8. FULL TURN KEY?
9. WHEN?

The deposit is paid, a delivery date is organised, the freight company will contact you and a quote is given to your nominated delivery address. Nothing could be simpler.

Whether you are building yourself, employing a builder or one of the many Builder/Agents to finish your Fusion, you have 24/7 support, and once the deposit is paid, you will receive full access to the Fusion Owner-Builder Web Site. This website has all the Plans, Build Manuals, Assembly Guide, Suppliers contact lists, and also the Fusion product kit lists such as Deck Hardware Kits, Sail Kits, Engine Kit lists, Electric Kits, etc

etc. Unlike other Kit manufacturers, Fusion allows you to buy direct from the manufacturer or importer at OEM pricing, saving a small fortune.

The Kit Price is in Euro.

(for a current converted \$ price, please contact us).

Freight will be quoted once your delivery address is known.

Congratulations on seriously considering the Fusion 40, you will never be disappointed.

FUSION CATS AUSTRALIA P/L

PHONE: 0414 246 535
E: info@fusioncats.com
W: www.fusioncats.com